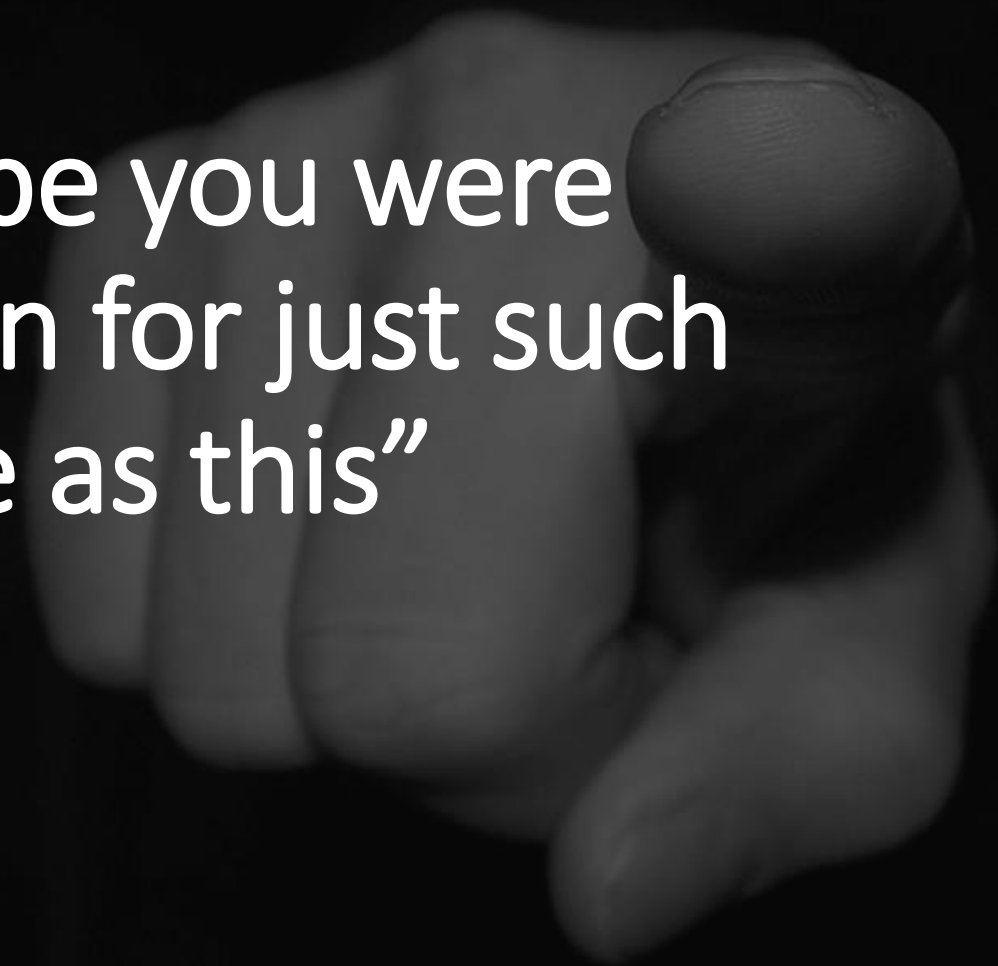
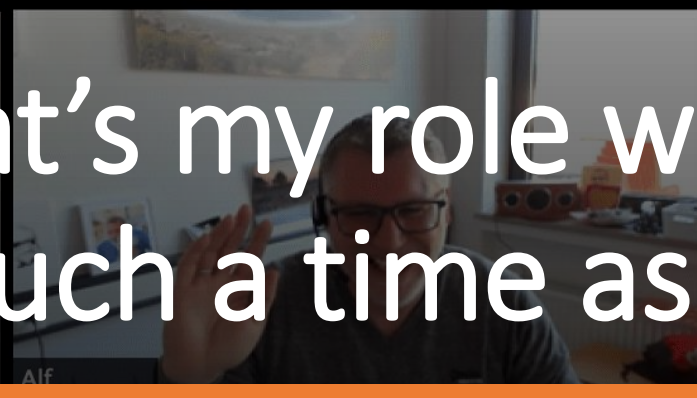
A dramatic, monochromatic photograph of a turbulent sea. The sky is filled with dark, heavy clouds, suggesting an approaching storm. The water is dark and choppy, with numerous small waves. In the foreground, a larger wave is breaking, creating a thick, white foam that stretches across the bottom of the frame. The overall mood is one of intensity and challenge.

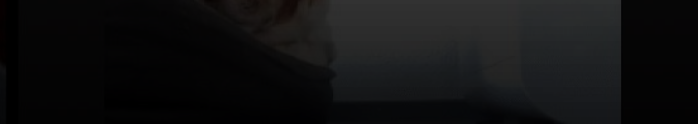
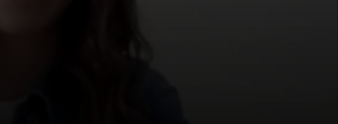
“Don’t be afraid.
Take courage. I am
here!”

A grayscale image of a hand holding a small, round object, possibly a coin or a small stone, against a dark background. The hand is positioned in the center-right of the frame, with the thumb and index finger gripping the object. The lighting is soft, highlighting the texture of the skin and the object.

“Maybe you were
chosen for just such
a time as this”

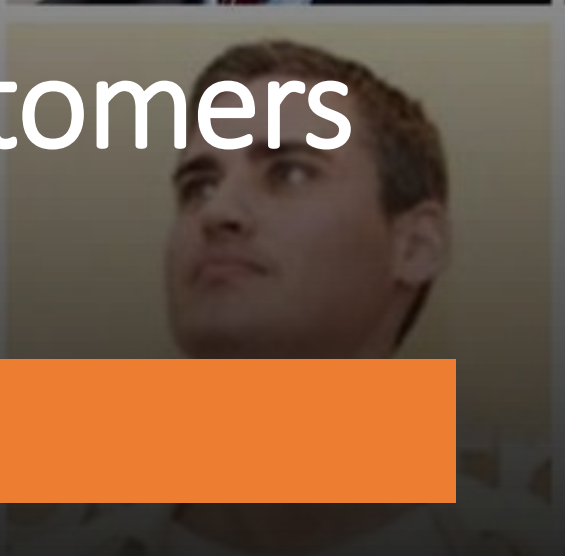
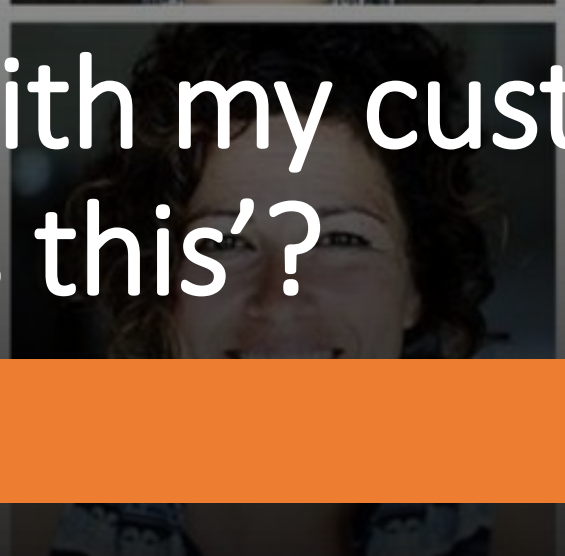
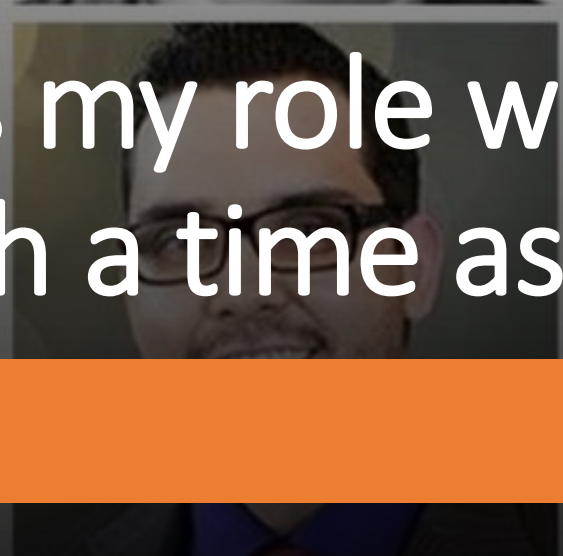
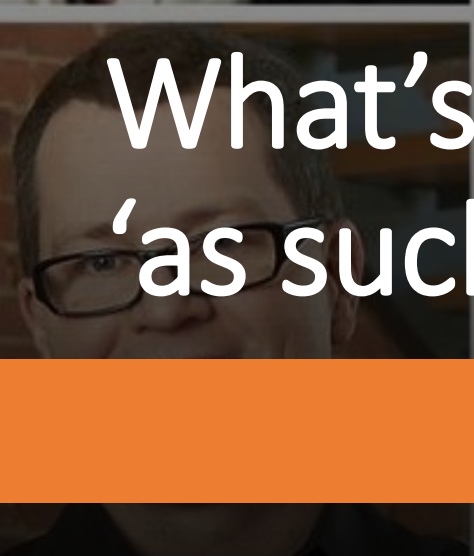


What's my role with my colleagues
'at such a time as this'?





What's my role with my customers
'as such a time as this'?





Life's a peach not
an orange



Colossians 3:23 –

Whatever you do, work at it with all your heart, as working for the Lord, not for human masters, since you know that you will receive an inheritance from the Lord as a reward. It is the Lord Christ you are serving. Anyone who does wrong will be repaid for their wrongs, and there is no favouritism.

– Colossians 4:6

Masters, provide your slaves with what is right and fair, because you know that you also have a Master in heaven. Devote yourselves to prayer, being watchful and thankful. And pray for us, too, that God may open a door for our message, so that I may proclaim it clearly, as I should. Be wise in the way you act toward outsiders; make the most of every opportunity. Let your conversation be always full of grace, seasoned with salt, so that you may know how to answer everyone.

A grayscale image of a hand with the index finger pointing towards the text. The hand is positioned on the right side of the frame, with the index finger pointing left towards the text. The background is dark, and the hand is rendered in shades of gray, creating a subtle, ethereal effect.

Reaching the parts
other Christians
cannot reach

If God has chosen us for 'such a time as this', is there anything we need to recalibrate in how we interact with our colleagues, customers, suppliers or the business community?

Is there anything that is impacting on
our readiness to share the good news
‘at such a time as this’:
prayer, actions, words?
